



Moorland Surgical Supplies

**B.A.U.N Bladder
Cancer Study Day**

Bev Hooley

Bev Hooley

I started my nurse career in 1972 as an orthopaedic nurse and became dual qualified in 1977 on completion of my Registered General training.

After many years of service with the NHS in diverse areas of nursing (i.e. orthopaedics, accident and emergency, general and colorectal surgery and urology), I decided to combine my nursing skills with a move to the commercial sector. Here I worked as a nurse advisor to an appliance contractor, allowing me to provide nurse professionals and patients access to the wealth of knowledge I have gained in order that their experience of using stoma care, urology and continence equipment is trouble free.

I have attended many study sessions over my time in this position including the Principles of stoma care, the Promotion of continence and the Management of Incontinence.

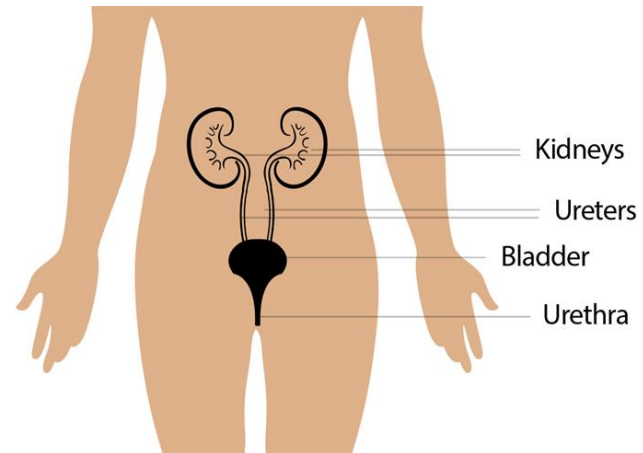
I was promoted to Nurse Manager in 2009 and now lead an expert team ensuring that all patient groups are cared for.

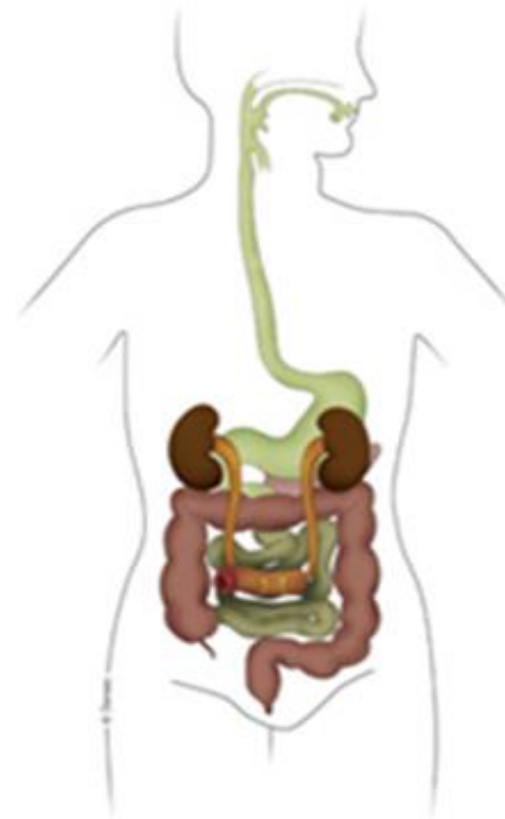
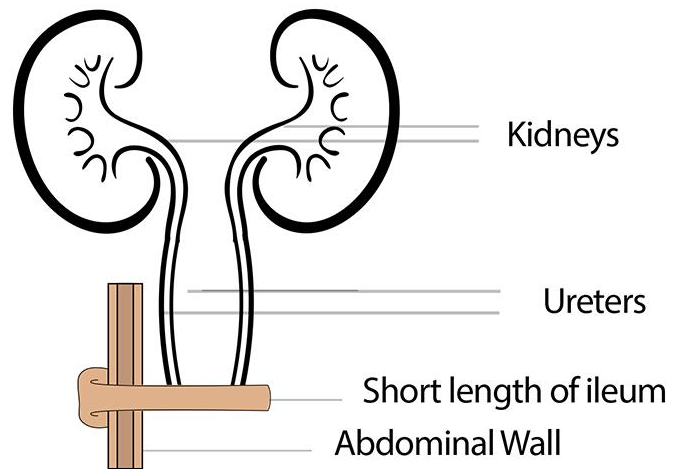
Stoma

- It is derived from the Greek word 'STOMA-ATOS' meaning mouth or opening.
- The type of stoma to be discussed today is Urostomy.

What is it

This is a surgical procedure performed to divert the passage of urine from the kidneys to the outside via a stoma created on the abdominal wall





Where is it?

- RIF why?
- Siting
- Waistline
- Skin folds and creases
- Previous scar
- Bony prominences
- Visible

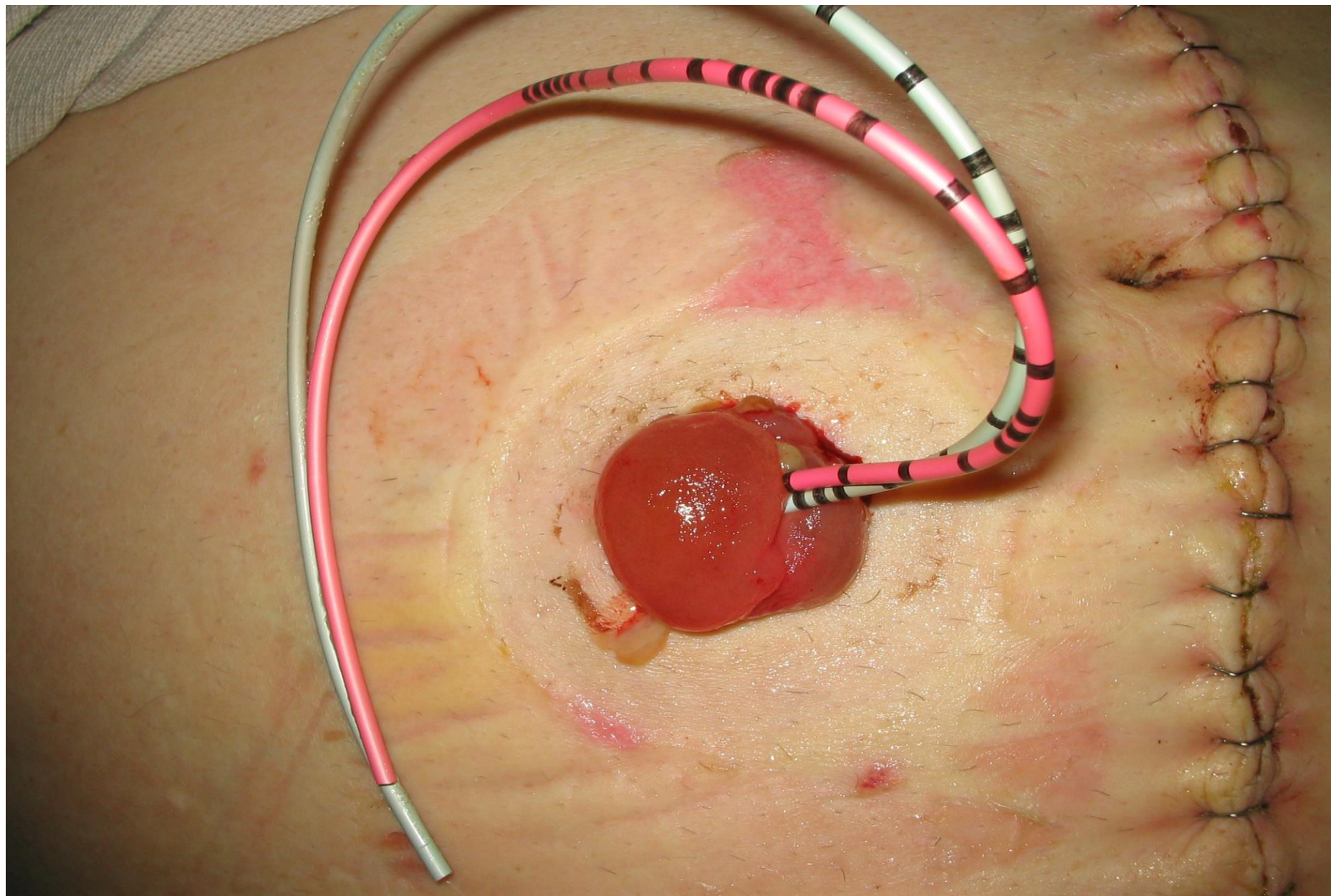




Photograph taken from 'Abdominal Stomas and their Skin Disorders' (2001) by Calum C Lyon and Amanda J Smith

What does it look like?

- Red and moist in colour
- No sensation
- Always working
- Mucous







Types of appliances

- Clear /soft cover
- Tap
- Night drainage/ leg bags
- Size







Photograph taken from 'Abdominal Stomas and their Skin Disorders' (2001) by Calum C Lyon and Amanda J Smith

Taking a sample from a Urostomy

- Never take it from the night bag tubing or pouch!!!
 - Ideally small catheter inserted into Urostomy
- Alternatively.....
- First clean sample from a newly applied pouch.

Life with a stoma

Beyond the practicalities.....

- **Body image**
- **Relationships**
- **Exercise**
- **Travelling etc**

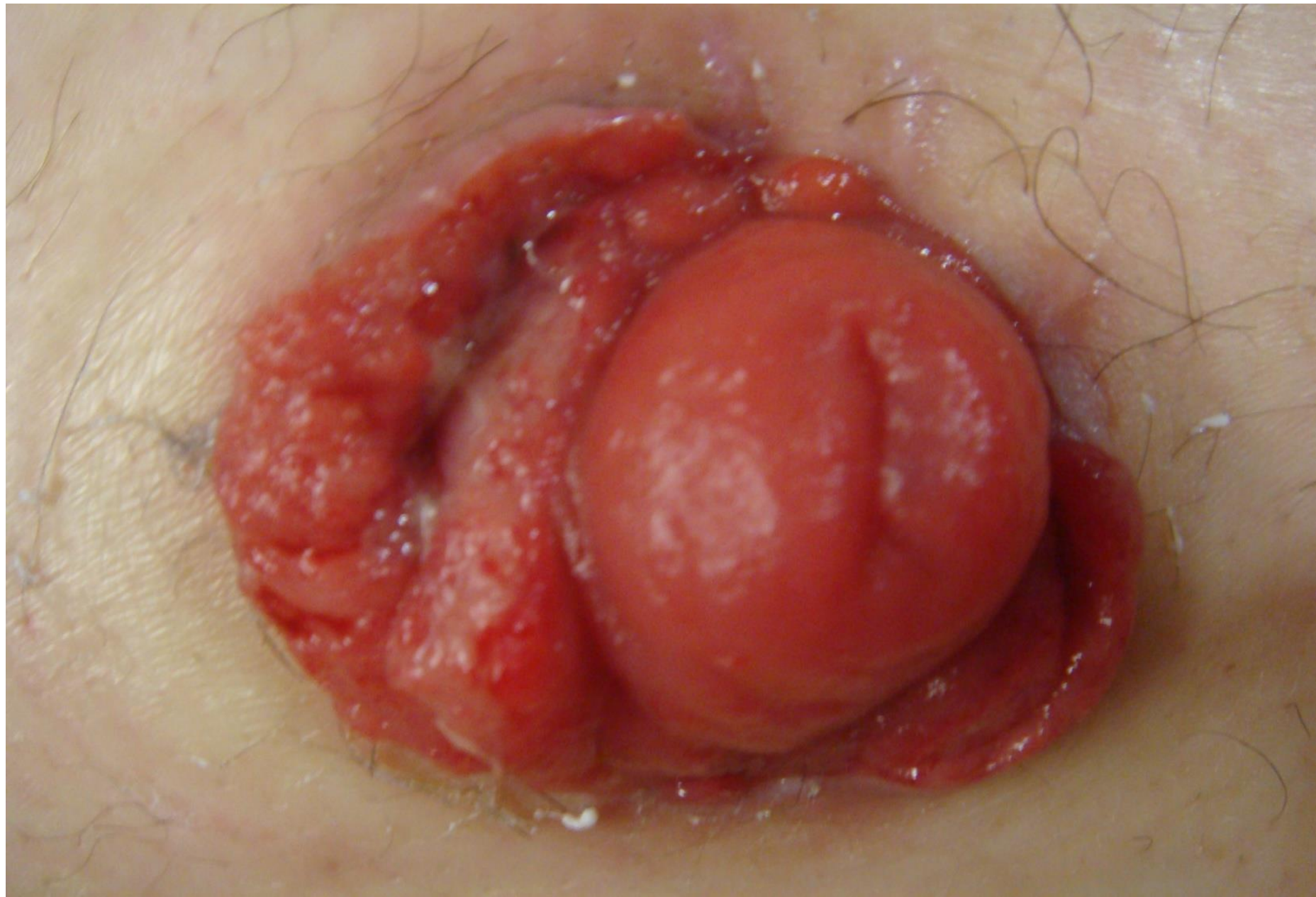
Problems

If you find a patient experiencing a problem please refer to your local stoma nurse or to one of the Moorland nurse specialists. Most problems are sortable!!











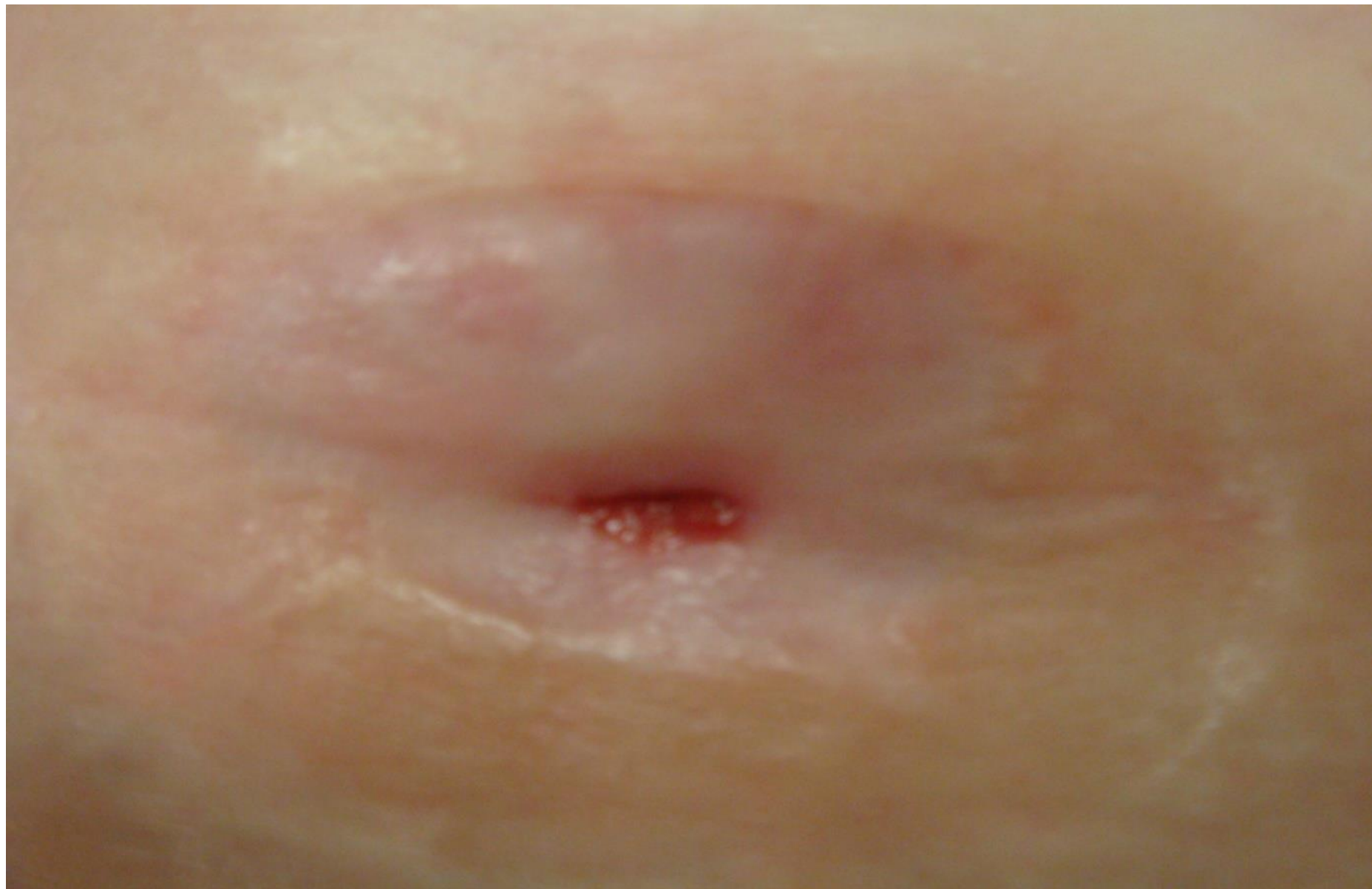






























I hope this has been a helpful session.

Thank you for listening